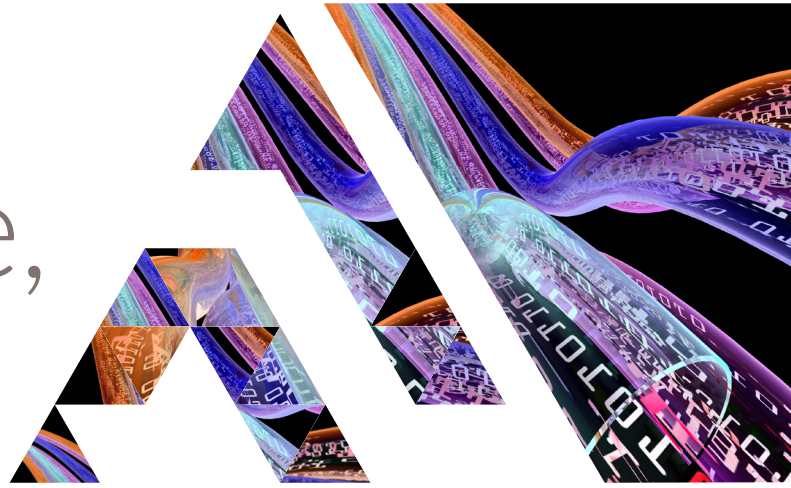


# Fast, Secure, Compliant



The Audaconnect service is an encrypted API-based platform which enables fast, secure and GDPR compliant integration. The flexibility of the service allows only the relevant data to be passed to service providers, such as bodyshop management systems (BMS) or parts suppliers.

For more information about Audaconnect and how you can ensure your services will not be disrupted, please contact the Audatex Service Desk Team on +44 (0)1189 235 666 or email [servicedesk@audatex.co.uk](mailto:servicedesk@audatex.co.uk). Alternatively, contact your service provider directly to ensure they are using Audaconnect.

## **What happens to the assessment and images that I currently export from Audaenterprisegold into my Bodyshop management system?**

Rather than dropping to a location on your computer, the assessment data and image files will now be digitally communicated to your bodyshop management system provider, via a fast-secure feed.

## **Why can't I export from Audaenterprisegold to my 3rd party systems anymore?**

Ahead of the GDPR deadline we will be turning off the ability to export to a local file on your PC in order to be compliant with the new 2018 GDPR regulations. If your service provider, such as Bodyshop Management System or your parts supplier, has not integrated to Audaconnect before this time, you may find that you cannot export after the GDPR deadline. If you have any concerns, please contact your service provider directly in order to be switched over.

## **I've already been switched over to Audaconnect, but I can't export from Audaenterprisegold into my bodyshop management system anymore?**

If you're having technical difficulties, in the first instance, please contact your bodyshop management system provider. If the issue is that you require permission to access Audaconnect, contact the Audatex Service Desk on +44 (0)1189 235 666 or email [servicedesk@audatex.co.uk](mailto:servicedesk@audatex.co.uk).

## **Can 3rd party parts solution providers of my choice still receive the Audaenterprisegold assessment parts data to continue their services?**

Yes, Audaconnect is being used to provide a parts data feed to 3rd parties that choose to integrate to Audatex. This enables them to receive parts data for the customers they have relationships with.

**For the latest list of Service providers currently integrated with Audaconnect please visit: [www.audaconnect.co.uk](http://www.audaconnect.co.uk)**

## **I am a service provider looking to sign up to Audaconnect**

For more information and to sign up to Audaconnect, please contact the Service Desk on +44 (0) 1189 235 666 or email [servicedesk@audatex.co.uk](mailto:servicedesk@audatex.co.uk) and a member of our development team will be in contact with you.

## **I am a Bodyshop owner and want to find out more**

For more information about Audaconnect and how you can ensure your services will not be disrupted, please contact the Audatex Service Desk Team on +44 (0)1189 235 666 or email [servicedesk@audatex.co.uk](mailto:servicedesk@audatex.co.uk). Alternatively, we advise you also contact your service provider directly to confirm if they are using Audaconnect.

## **I do not use the manual export functionality in Audaenterprisegold am I affected?**

No, if you do not use this functionality then you will not be affected by this change.